



Westbourne Road, SE26 | £2,500 Per Month

02087029777

[sydenham@pedderproperty.com](mailto:sydenham@pedderproperty.com)

**pedder**  
We live local



# In General

- Available mid August
- Two receptions
- Kitchen / breakfast room
- Three double bedrooms
- Family bathroom
- Private garden
- Short stroll to Alexandra Rec
- Excellent transport links
- Unfurnished

# In Detail

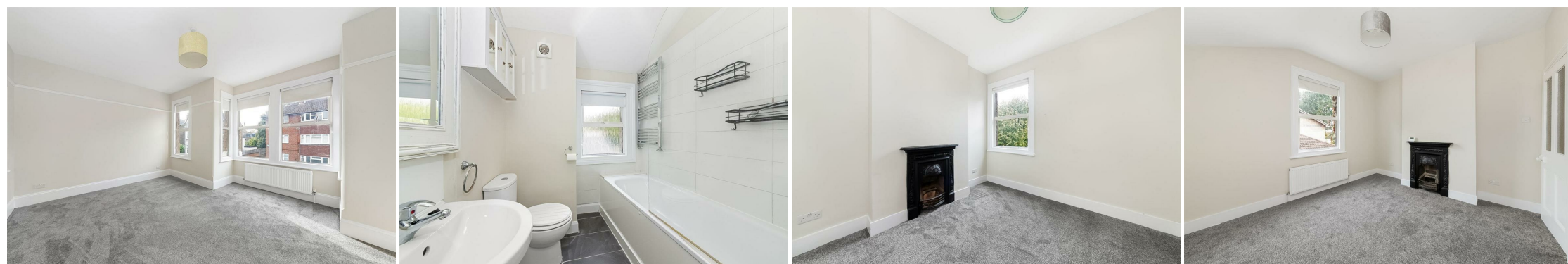
Elegant and beautifully presented, this three bed semi detached Victorian home is a short stroll away from Alexandra Recreation Grounds, excellent transport links and plenty of shopping outlets on the high street.

The entrance hall is fresh and welcoming, with white walls and honey stained original flooring leading into the front reception which enjoys lovely high ceilings, a gorgeous fireplace and square bay window. The second reception space is perfect for dining with a floor to ceiling window overlooking the gardens and an abundance of natural light.

To the rear the kitchen includes excellent storage and work space, whilst the charming dining area provides the perfect spot to socialise and gather for meals. There is direct access into the garden where a lovely patio provides the perfect setting for a morning coffee, full of mature plants and shrubs which run along either side. Upstairs are three double bedrooms and a family bathroom.

Westbourne Road is moments from Alexandra Recreation Grounds, highly sought-after for its views and peacefulness as well as proximity to the children's park, restaurants, schools and shopping facilities. Also within easy reach of Crystal Palace Park, bars, restaurants and the excellent transport links that this part of South East London is known and loved for.

EPC: E | Council tax band: E | Available mid August | Unfurnished | HD: £576.92 | SD: £2,884.61




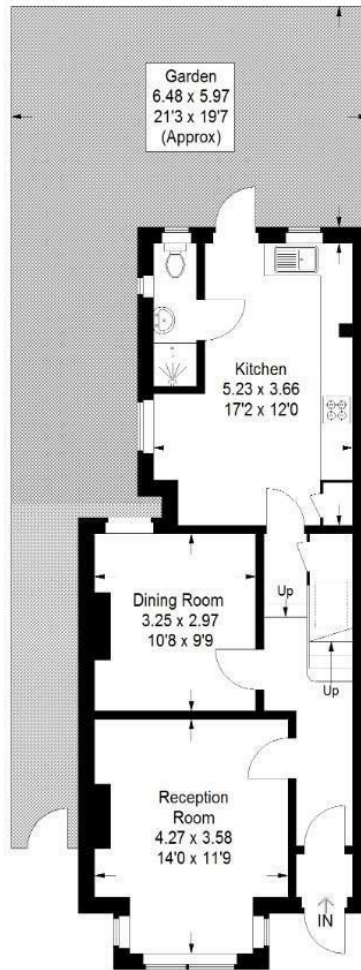
# Floorplan

Westbourne Road, SE26

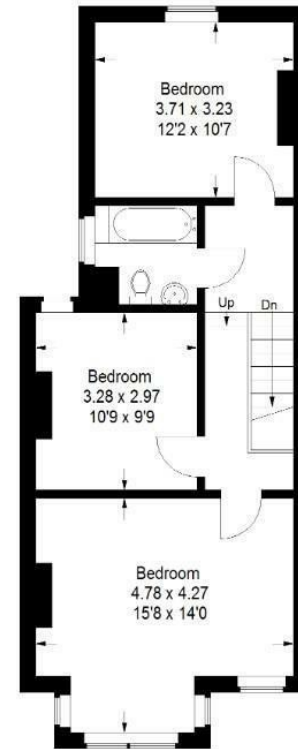
Approximate Gross Internal Area  
109.5 sq m / 1179 sq ft



 = Reduced headroom below 1.5 m / 5'0"



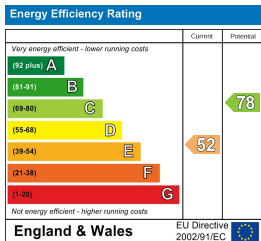
Ground Floor



First Floor

Copyright www.pedderproperty.com © 2025

These plans are for representation purposes only as defined by RICS - Code of Measuring Practice. Not drawn to Scale. Windows and door openings are approximate. Please check all dimensions, shapes and compass bearings before making any decisions reliant upon them.



Pedder Property Ltd trading as Pedder for themselves and for the vendor/landlord of this property whose agents they are, give notice that (1) these particulars do not constitute any part of an offer or contract, (2) all statements contained within these particulars are made without responsibility on the part of Pedder or the vendor/landlord, (3) whilst made in good faith, none of the statements contained within these particulars are to be relied upon as a statement of representation or fact, (4) any intending purchaser/tenant must satisfy him/herself by inspection or otherwise as to the correctness of each of the statements contained within these particulars, (5) the vendor/landlord does not make or give either Pedder or any person in their employment any authority to make or give representation or warranty whatsoever in relation to this property.